

Spring 2

This half term's open-ended task is focussed on our Geography topic of the rainforest and our Science topic of the digestive system.

Choose one of these ideas or you may have something else you'd like to do. Bring your completed project in on the week commencing 23rd March when we will share what we have made to the class.

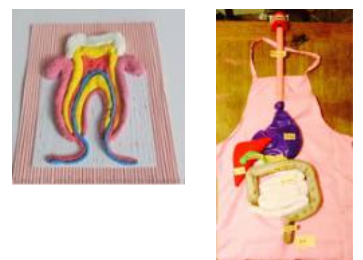
Suggestions:

- Can you write a rainforest poem using your senses?
- We love Zoom in, zoom out in our science. Can you take a photo of something really close up, then a little further away for the class to guess?

- Can you create some rainforest art based on Joseph Cornell or Henri Rousseau?



- Make a 3-D version of the digestive system or make a model of your mouth including the different teeth or a tooth.



- Research what palm oil is. Is it a good thing? Where do you find it? Where does it come from?

If you can think of anything more exciting that demonstrates your learning at home, then I would be thrilled to see it! 😊